

# Navigating Women's Health

## COMMITTEE

**Winifred B. Mack, RN, BSN, MPA**  
*Executive Director*  
Southside Hospital

**Ivy Algazy**  
*Director, Communications*  
North Shore-LIJ Health System

**Linda Bohlsen**  
*East Islip, NY*

**Jean Cacciabauda, MD**  
*Chief of Cardiology*  
Southside Hospital

**Hon. Angie Carpenter**  
*Suffolk County Treasurer*

**Nancy Dintenfass, DO**  
*Director of Women's Imaging*  
Bohlsen Women's Imaging Center

**Edward Fraser**  
*Director, Community Relations*  
Southside Hospital

**Cecelia T. Fullam**  
*Senior Vice President*  
North Shore-LIJ Health System  
Foundation

**Catherine Hottendorf, RN**  
*Associate Executive Director*  
Southside Hospital

**Felice Jones-Lee, PhDc, RN, CPHQ**  
*Associate Executive Director*  
Southside Hospital

**Debbie McElligott, DNP**  
*Nurse Practitioner*  
Southside Hospital

**Nora C. Perry**  
*Vice President, Development*  
Southside Hospital

**Donna Rana**  
*Senior Marketing Representative*  
Bohlsen Women's Imaging Center

**Neeta M. Shah, MD, FACP**  
*Vice President, Women's Health*  
North Shore-LIJ Health System

**Colleen Solazzo**  
*Bay Shore, NY*

**Renee Scoskie**  
*Associate Executive Director*  
Southside Hospital

**Sue Rassekh**  
*Associate Executive Director*  
Great South Bay YMCA

**North  
Shore LIJ Southside Hospital**

**North  
Shore LIJ Southside Hospital**

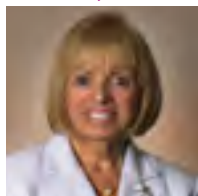
Please join us for

# Navigating Women's Health

**Southside Hospital's Inaugural  
Women's Health Conference**

*A Centennial Celebration Event*

### *Luncheon Keynote Speaker*



**Angie Carpenter**  
*Suffolk County Treasurer*

### *Moderator*



**Neeta M. Shah, MD, FACP**  
*Vice President, Women's Health  
North Shore-LIJ Health System*

## *Schedule of the Day*

**8:30am to 9:30am**

### *Free Health Screenings*

Hosted by

**Dr. Christine O'Donoghue-Kitt & Dr. Elaine Schaefer**

**9:30am**

### *Continental Breakfast*

**10:00am**

### *Welcome & Remarks*

**10:30am**

### *Panel Discussion*

**11:45am**

### *Lunch and Keynote Speech*

**1:00pm**

Choice of Session

#### **A. "A Woman's Heart is Not a Little Man's"**

Presented by:

**Jean Cacciabauda, MD**

#### **B. "Menopause ... the Good, the Bad and the Hot"**

Presented by:

**Sarah Schwartz, MD**

**1:45pm**

Choice of Session

#### **A. "Mind/Body/Self"**

Presented by:

**Debbie McElligott**

*Director of Patient Care Services, North Shore University Hospital*

#### **B. "Nutrition and Exercise"**

Presented by:

**Leah Pasquarella**

*Chief Dietician, Southside Hospital*

**Sue Rassekh**

*Associate Executive Director, Great South Bay YMCA*

Please join us for Southside Hospital's Inaugural  
Women's Health Conference

# *Navigating Women's Health*

featuring Long Island's leading physicians

*Wednesday, October 12, 2011*

**The Bourne Mansion**

*500 Montauk Highway, Oakdale, New York*



## *Panelists*



**Sarah Schwartz, MD**  
*Director of Obstetrical Services  
Southside Hospital*



**Jean Cacciabauda, MD**  
*Chief of Cardiology  
Southside Hospital*



**Nancy Dintenfass, DO**  
*Director of Women's Imaging  
Bohlsen Women's Imaging Center*



**Gisele Wolf-Klein, MD**  
*Director of Geriatric Education  
North Shore University Hospital &  
Long Island Medical Center*